

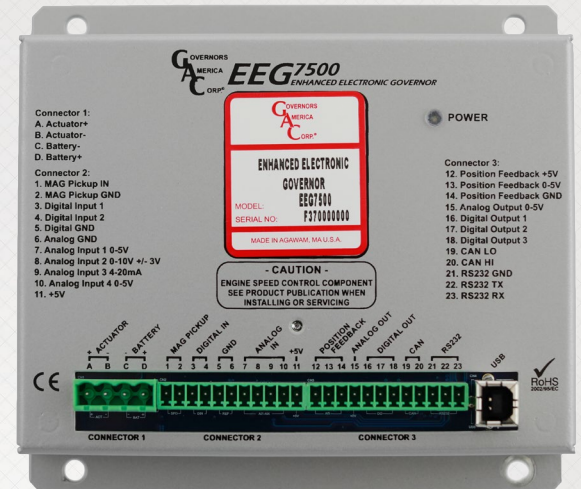


NEW!

Enhanced Electronic Governor EEG7500

GAC's EEG7500 digital governor is designed to regulate engine speed on diesel and gaseous fueled engines. When paired with a GAC actuator, the EEG system is an upgrade for any mechanical governor system that needs flexibility, precision, or accurate control of governed speed. The EEG is designed for industrial engine applications from generator sets, mechanical drives, pumps, compressors and off-road mobile equipment.

The EEG7500 is an Enhanced Electronic Digital Speed Controller that operates either bidirectional motors or proportional actuators with or without a position feedback signal.



FEATURES

- 3 Operating Modes:
 - Speed Governing with Position Feedback
 - Governing without Position Feedback
 - Actuator Positioner Mode
- Compatible with Either Bidirectional Motors or Proportional Actuators.
- Built-in USB Port for Easy Configuration with Free Software, the GAConfig Tool.
- 4 Analog and 2 Discrete Inputs
- 1 Analog and 3 Discrete Outputs
- Fully Configurable, I/O Definition and Multiple Routings
- Accepts 0 - 5 V DC, 4-20 mA, 0-10 V DC or +/-3 V DC Input Signals
- CAN SAE J1939 Protocol and/or RS232 Communications

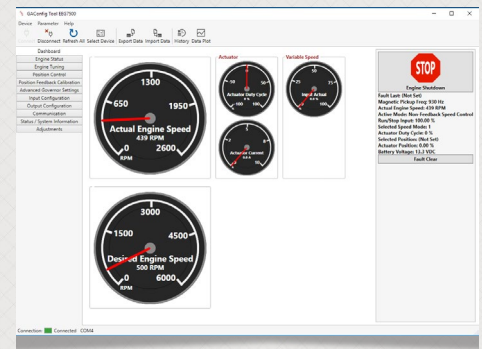
OPERATING MODES

- **FSC** (Feedback Speed Control)
Combines NFSC and POS function for use with proportional or bidirectional (torque motor) actuators; a position feedback sensor is required. The Speed PID position request is the input to the Positioner loop, the Position PID optimizes response and control of the requested actuator position.
- **NFSC** (Non-Feedback Speed Control)
Provides standard PID governing functionality for use with proportional actuators; no position feedback sensor required. PID governor functions are optimized for best response and control of the requested engine RPM.
- **POS** (Positioner Mode)
For actuator positioning control for use with proportional actuators or bidirectional motors; a position feedback sensor is required. The PID governor functions are optimized for best response and control of the requested actuator position.



GACONFIG TOOL

Programmed using the GAConfig Tool Software, the EEG is set up with a user friendly interface for application configuration, diagnostics and easy troubleshooting. The GAConfig Tool can be downloaded from GAC's Website.



SPECIFICATIONS

Performance

Isochronous Operation	± 0.25 %
Speed Range / Governor	100 - 12 KHz (Mag Pickup) (50 - 6000 RPM w/ 120 tooth flywheel)
Idle Adjust	Full Range
Drop Range	Up to 25 % Regulation
Speed Trim	+/- 120 R PM

Compliance / Standards

Agency	CE and RoHS-2 Requirements
Communications	RS-232-C, IEEE J1939

Environmental

Ambient Temperature	-40° to 85°C [-40° to +180°F]
Relative Humidity	up to 90 % at 38 °C (SAE J1455)
All Surface Finishes	Fungus Proof and Corrosion Resistant

Physical

Dimension	6.03 in x 5.50 in x 1.12 in [153 mm x 140 mm x 28 mm]
Weight	18.4 ozf [0.52 kgf]

Input / Output

Supply	12 - 24 V DC Battery Systems (6.5 to 32 V DC)
Polarity	Negative Ground (Case Isolated)
Power Consumption	200 mA continuous plus actuator current
Speed Sensor Signal	1.0 - 60 V RMS
Actuator Current	10 A Continuous
Load Share / Synchronizer Input	0 - 10 V DC (5 V nominal) or +/- 3.0 V DC
Reverse Power Protection	-40V
Transient Voltage Protection	60V
Communications	USB, RS232-C / SAE J1939

Reliability

Vibration	7g @ 10 - 2000 Hz (SAE J1455)
Shock	20 g @ 11 ms (SAE J1455)
Testing	100 % Functional Testing

TM6 BI-DIRECTIONAL TORQUE MOTOR

Integrated Throttle Body (ATB) pump mounted and Universal Bi-Directional actuators compatible with EEG7500 Enhanced Electronic Governor Controller. Available with Position Feedback Sensor for Variable Speed Gaseous and Diesel fueled applications, with or without Internal Return Springs.



TM6 BI-DIRECTIONAL TORQUE MOTOR

Supply	12 - 24 V DC battery systems
Travel	70° Rotation, adjustable travel limits
Torque	0.42 Ft-Lbs [0.57 N m]
Mounting Bolt Pattern	2.0 in [50.8 mm] square through hole for M5 or #10 bolts
Position Feedback Sensor	Integrated, Linearity +/- 0.5 %, 0 - 5 V (0.5-4.5 V Signal)
Connector	Delphi 150 Series, 8 position single connector, all signals
Optional	Return spring and/or lever assembly
Compliance	RoHS, CE
Sealing	IP56
Dimensions	2.92 in H x 2.86 in W x 2.50 in L [74.2 mm H x 72.6 mm W x 63.5 mm L]
Weight	32 ozf (0.91 kgf)

Governors America Corp.
720 Silver Street Agawam, MA 01001
Phone: 413.233.1888 Fax: 413.789.7736
www.governors-america.com
GAC@governors-america.com