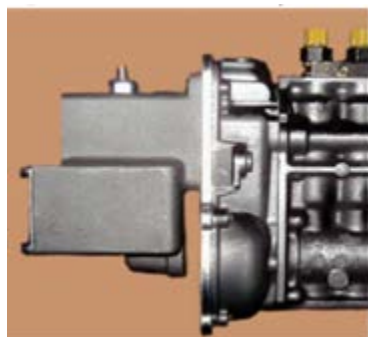


# GAC 175 and 176 Series Actuator Mounting Kits

GAC offers a diverse line of mounting kits for the 175 and 176 Series of Actuators.

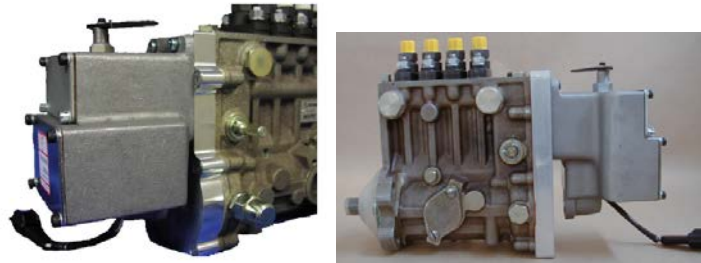
See your GAC representative for more details.

KIT	APPLICATION
<b>175 SERIES KITS</b>	
<a href="#">KT153</a>	MOTORPAL MI SERIES 4 & 6 CYLINDER PUMPS PP4M10PLI & PP6M10PLI
<a href="#">KT175A-R</a>	BOSCH 'A' PUMP RIGHT HAND RACK
<a href="#">KT175A-R-SA</a>	BOSCH 'A' PUMP RIGHT HAND RACK (ADD175SA PUMP-INTERNAL RETURN SPRING)
<a href="#">KT175-L</a>	Longbeng-BH6PA PUMP ALSO REQUIRES <a href="#">KT275</a>
<a href="#">KT175-N</a>	NANYUE-B4PN540F PUMP
<a href="#">KT175-RS-R</a>	BOSCH RS/RSV GOVERNOR HOUSING – RIGHT HAND RACK
<a href="#">KT175-RS-R-ZEXEL</a>	BOSCH RS/RSV GOVERNOR HOUSING – RIGHT HAND RACK W/ PUMP FACE GASKET
<a href="#">KT197</a>	BOSCH EDC GOVERNOR HOUSING
<a href="#">KT275</a>	BOSCH P3000 SERIES PUMP CAMSHAFT BEARING RETAINER
<a href="#">KT276</a>	BOSCH P7000/P8000 SERIES PUMP CAMSHAFT BEARING RETAINER
<a href="#">KT283</a>	BYC/ASIMCO 'P' PUMP MOUNTING KIT
<a href="#">KT289</a>	BOSCH 'P' PUMP ACTUATOR MOUNTING KIT
<b>176 SERIES KITS</b>	
<a href="#">KT176 A</a>	BOSCH 'A' PUMP CAMSHAFT BEARING RETAINER – LEFT HAND RACK
<a href="#">KT176-A-RS-L</a>	BOSCH RS/RSV GOVERNOR HOUSING – LEFT HAND RACK



## KT153

Supports Motorpal Pump (Deutz 914) PP4M10P1N13021 and PP6M10P1N13021, with any GAC 175 Series actuator. Installation instructions available at [www.governors-america.com/](http://www.governors-america.com/) and search for KT153.

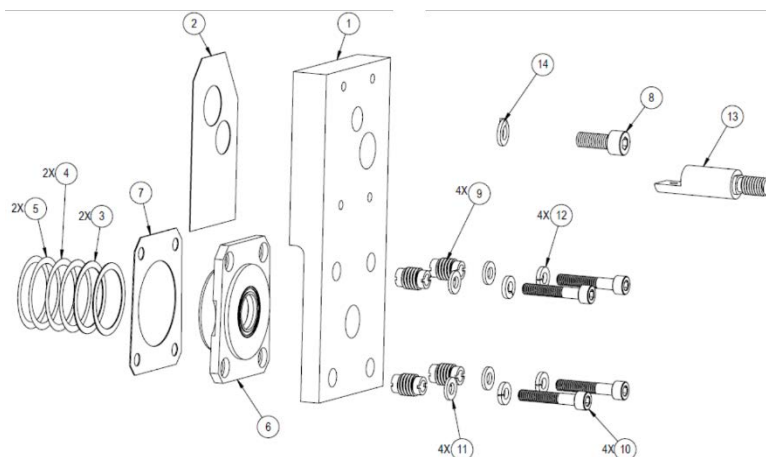


### KT153 Parts List

Item No.	Description	GAC P/N	QTY.
1	Rack Link	LK104	1
2	M6x12mm Screw	HW05-628	1
3	Mounting Plate	PL215	1
4	M6x30mm Flat Head Screw	HW05-629	6

## KT175A-R

Supports GAC 175 Series Actuators onto a Bosch 'A' Pump with a Right-Hand Rack. Mounts to all GAC 175 Series except ADD175S SA. Installation instructions available at [governors-america.com/](http://governors-america.com/) and search for KT175A-R.



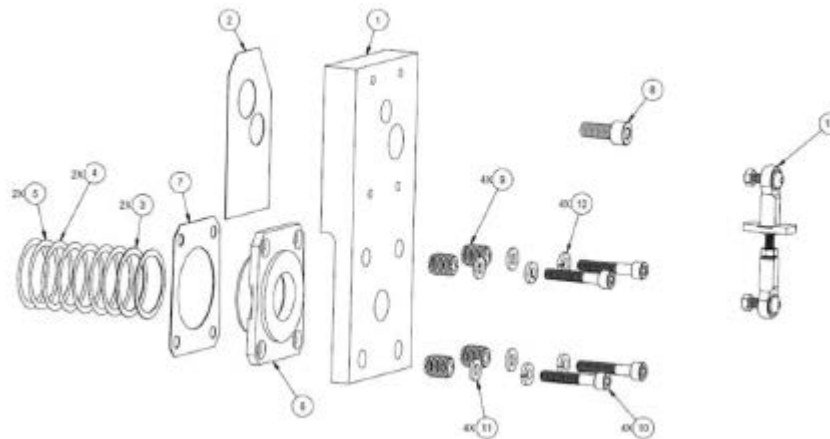
### KT175A-R Parts List

Item No.	Description	GAC P/N	QTY.
1	Mounting Plate	PL313	1

Item No.	Description	GAC P/N	QTY.
2	Mounting Gasket	GA207	1
3	Spacer, Shim 0.019 (0.48mm)	SR121-1	2
4	Spacer, Shim 0.004 (0.10mm)	SR121-2	2
5	Spacer, Shim 0.002 (0.05mm)	SR121-3	2
6	Plate, Bearing Retainer Assembly	PLS353	1
7	Gasket, Bearing Retainer	GA205	1
8	M8x20 Socket Head Cap Screw	HW05-562	1
9	M12, Screw, Adjusting Sleeve	HW04-454	4
10	M6x35 Socket Head Cap Screw	HW05-716	4
11	M6 Flat Washer	HW06-601	4
12	M6 Lock Washer	HW06-627	4
13	Link, Rack Extension	LK109	1
14	M8 Lock Washer	HW06-636	1

## KT175-A-R-SA

Supports GAC 175 Series Actuators onto a Bosch 'A' Pump with a Right-Hand Rack. Designed specifically for use with GAC ADD175S SA actuator with an internal rack return spring.



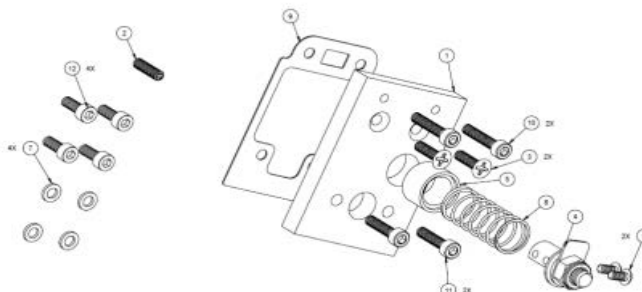
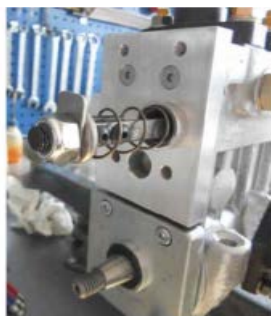
### KT175A-R Parts List

Item No.	Description	GAC P/N	QTY.
1	Mounting Plate	PL313	1
2	Mounting Gasket	GA207	1
3	Spacer, Shim 0.019 (0.48mm)	SR121-1	2
4	Spacer, Shim 0.004 (0.10mm)	SR121-2	2
5	Spacer, Shim 0.002 (0.05mm)	SR121-3	2
6	Plate, Bearing Retainer Assembly	PLS353	1
7	Gasket, Bearing Retainer	GA205	1

Item No.	Description	GAC P/N	QTY.
8	M8x20 Socket Head Cap Screw	HW05-562	1
9	M12, Screw, Adjusting Sleeve	HW04-454	4
10	M6x35 Socket Head Cap Screw	HW05-716	4
11	M6 Flat Washer	HW06-601	4
12	M6 Lock Washer	HW06-627	4
13	Link Assembly	LK270	1

## KT175-L

Supports mounting any GAC 175 Series Actuator to Longbeng-BH6PA Pump. Installation instructions available at [www.governors-america.com/](http://www.governors-america.com/) search for KT175-L. The complete installation also requires [KT275](#).



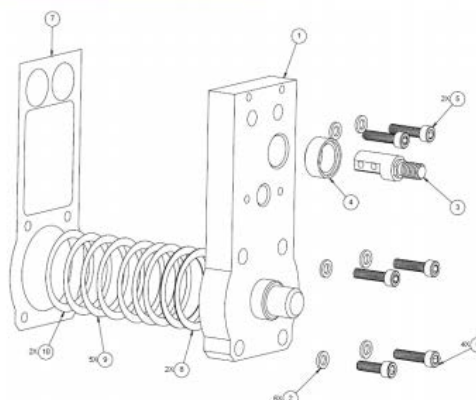
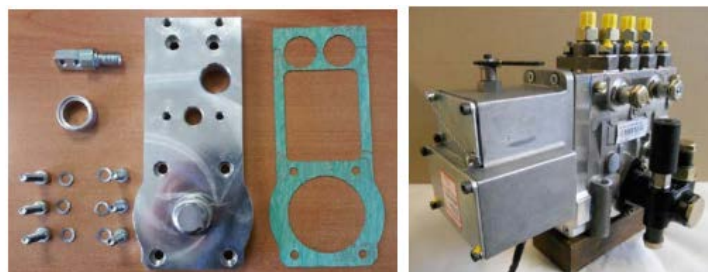
### KT175-L Parts List

Item No.	Description	GAC P/N	QTY.
1	Mounting Plate	PL175-L	1
2	Set Screw M6X35mm	HW05-712	1
3	Flat Head M6X22	HW05-713	2
4	Link Assembly	LKS175-L	1
5	Spring Retainer	RT172	1
6	Button Head M5X10	HW05-550	2
7	M6 Spring Washer	HW06-600	4
8	Spring, Rack Return	SP170	1
9	Gasket, Mounting	GA196	1
10	Socket head Cap Screw M6X25	HW05-515	2

Item No.	Description	GAC P/N	QTY.
11	Socket head Cap Screw M6X30	HW05-547	2
12	Socket head Cap Screw M6X16	HW05-566	4

## KT175-N

Supports GAC 175 Series Actuator to NANYUE-B4PN540F Pump.



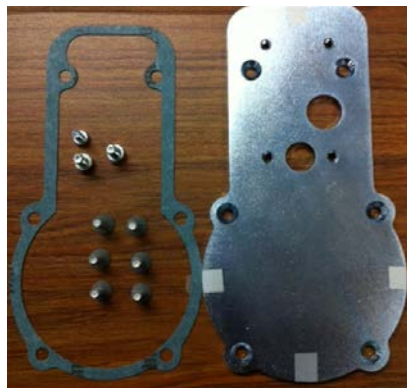
### KT175-N Parts List

Item No.	Description	GAC P/N	QTY.
1	Plate, Bearing retainer	PL175-N	1
2	Spring Washer M6	Hw06-600	6
3	Link, Rack	LK175-N	1
4	Spring Retainer	RT175-N	1
5	Socket head Cap Screw	M6X20 HW05-514	2
6	Socket head Cap Screw	M6X25 HW05-515	4
7	Gasket	GA119	1
8	Spacer, Shim 0.019"	SR120-1	2
9	Spacer, Shim 0.004"	SR120-2	5
10	Spacer, Shim 0.002"	SR120-3	2



## KT175-RS-R

Supports Bosch 'A' Pumps with a right hand rack. Mounts onto half of the mechanical governor housing. Installation instructions available at [www.governors-america.com/](http://www.governors-america.com/) search for KT175-RS-R.



### KT175-RS-R Parts List

Item No.	Description	GAC P/N	QTY.
1	Gasket, Plate	GA176	1
2	Plate, Mounting	PL298	1
3	Link, Rack	LK175	1
4	Cap screws, M6x16	HW05-566	4
5	Flat Head M6x18	HW05-704	6

## KT175-RS-R-ZEXEL

Supports Bosch 'A' Pumps with a right hand rack. Mounts onto half of the mechanical governor housing.



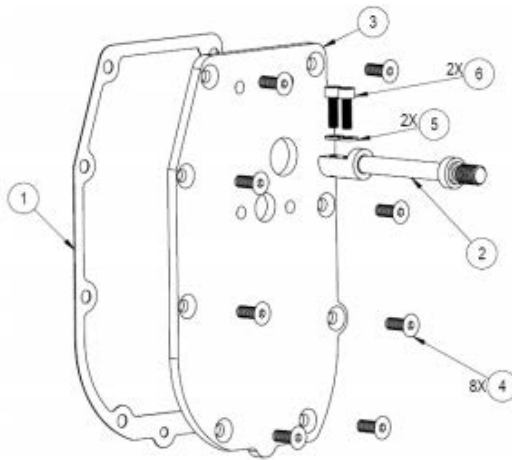
### KT175-RS-R-ZEXEL Parts List

Item No.	Description	GAC P/N	QTY.
1	Gasket, Plate	GA176	1

Item No.	Description	GAC P/N	QTY.
2	Plate, Mounting	PL298	1
3	Link, Rack	LK175	1
4	Cap screws, M6x16	HW05-566	4
5	Flat Head M6x18	HW05-704	6
6	Gasket, gov. housing	TBD	1

## KT197

Supports GAC 175 Series Actuators to Bosch EDC Governor Housing.



## KT197 Parts List

Item No.	Description	GAC P/N	QTY.
1	Gasket, Plate	GA209	1
2	Link, Rack	LK108	1
3	Plate, Mounting	PL254	1
4	Flat Head M6x16	HW05-565	8
5	M5 Spring Washer	HW06-615	2
6	Cap Screws, M5X14	HW05-499	2

## KT275

Supports Bearing lit mounting for GAC 175 Series Actuators to Bosch “P3000” pump bearing kit with flat plate on bottom. Always Measure the Bolt Hole Spacing for Confirmation.

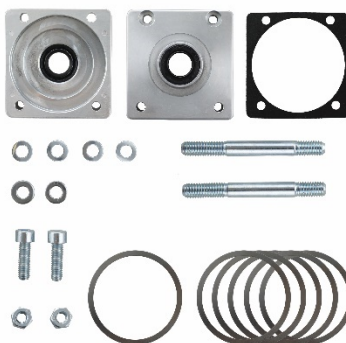


**KT275 Parts List**

Item No.	Description	GAC P/N	QTY.
1	Bearing Retainer Plate		1
2	Pump Sealing Gasket		1
3	Bearing Shimming Kit		1
4	Screw Mounting Kit		1

## KT276

Supports Bearing kit mounting for GAC 175 Series Actuators to Bosch “P7000” pump with plugs on bottom. Always Measure the Bolt Hole Spacing for Confirmation.



**KT276 Parts List**

Item No.	Description	GAC P/N	QTY.
1	Bearing Retainer Plate		1
2	Pump Sealing Gasket		1
3	Bearing Shimming Kit		1
4	Screw Mounting Kit		1



## KT283

Supports GAC ACD175A with BYC/Asimco 'P' Pump. The retainer and link are not included in kits but are included with the BTC. The kit is included and packaged with the actuator.



### KT283 Parts List

Item No.	Description	GAC P/N	QTY.
1	Gasket, Mounting	GA196	1
2	Hex Head M5x10	HW05-550	2
3	Cap Screws M6x16	HW05-566	4
4	Spring Washer M6	HW06-600	4
5	Castle Nut M10	HW07-710	1
6	Plate, Shut-Off	PL171	1
7	Spring Retainer	RT171	1
8	Spring, Rack Return	SP170	1

## KT289

ADD175A, Bosch 'P' Pump – This kit is the same as KT283 except it includes an additional spring retainer and rack link assembly. This kit is included and packaged with the actuator.



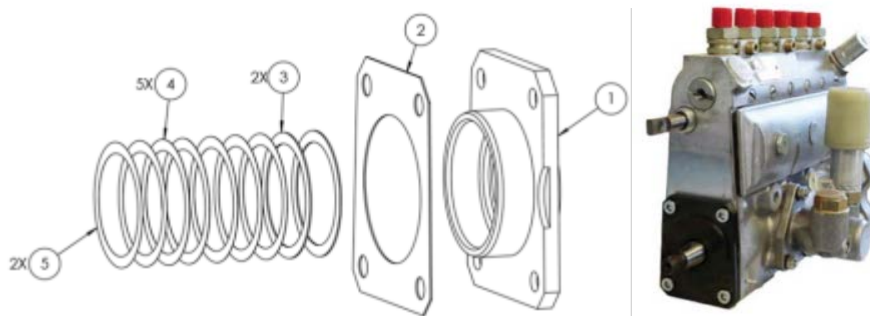
### KT289 Parts List

Item No.	Description	GAC P/N	QTY.
1	Gasket, Mounting	GA196	1
2	Hex Head M5x10	HW05-550	2

Item No.	Description	GAC P/N	QTY.
3	Cap Screws M6x16	HW05-566	4
4	Spring Washer M6	HW06-600	4
5	Castle Nut M10	HW07-710	1
6	Plate, Shut-Off	PL171	1
7	Spring Retainer	RT171	1
8	Spring, Rack Return	SP170	1
9	Link Assembly, Rack	LKS172	1
10	Spring Retainer	RT172	1

## KT176A

Supports GAC 175 Series Actuators to Bosch EDC Governor Housing.

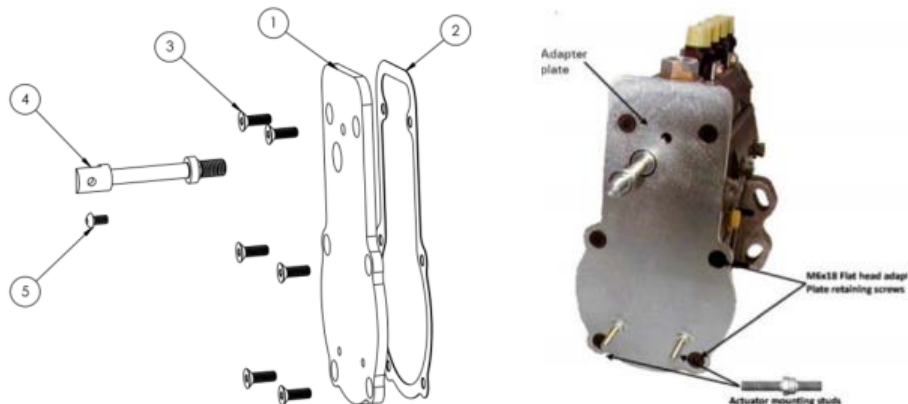


### KT176A Parts List

Item No.	DESCRIPTION	GAC PN	QTY.
1	Plate, Bearing Retainer	PL353	1
2	Gasket, Bearing Retainer	GA205	1
3	Spacer, Shim 0.019 (0.48mm)	SR121-1	2
4	Spacer, Shim 0.004 (0.10mm)	SR121-2	5
5	Spacer, Shim 0.002 (0.05mm)	SR121-3	2
6	Seal, Pump Drive Shaft	SE100	1

## KT176A-RS-L

Supports GAC 175 Series Actuators to Bosch EDC Governor Housing.



**KT176A-RS-L Parts List**

Item No.	Description	GAC P/N	QTY.
1	Gasket, Plate	GA176	1
2	Hex Head M5x10	HW05-550	1
3	Flat Head M6x18	HW05-704	6
4	Mounting Plate	PL299	1